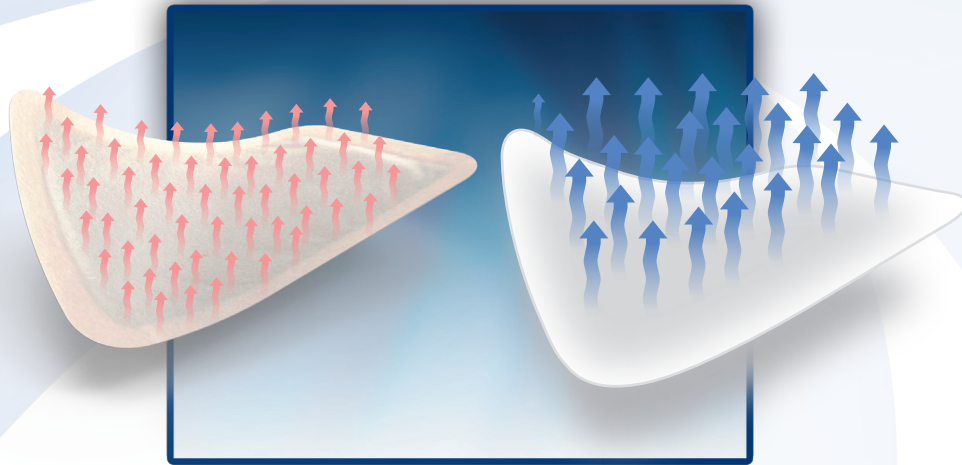


Thermoregulating pads



Device Description:

Thermoregulating pads include the following variants which are:

- 1) **ThermaPatch** (which includes both **ThermaPatch Adhesive** and **ThermaPatch Non-Adhesive**)
- 2) **Pharmacool**

1. ThermaPatch:

- Easy to use body warmer that provide drug free low- level heat therapy upon contact with air for extended periods of time for up to 8 hours, may be equipped with adhesive zone to ease application.

- ThermaPatch is available in the both versions:

- A) With adhesive side: **ThermaPatch Adhesive**
- B) Without adhesive: **ThermaPatch Non-Adhesive**

2. Pharmacool:

- **Pharmacool** designed to provide on spot cold treatment and instant soothing pain relief that can last from 20 to 30 minutes based on size.

Intended Purpose:

Thermoregulating pads, are primarily intended for managing and regulating temperature. This can involve either warming or cooling depending on the specific application and design of the pad. They can be used to promote healing process resulting in pain relief.

ThermaPatch

(ThermaPatch Adhesive and ThermaPatch Non-Adhesive)

- ThermaPatch is intended for pain relief by increasing blood flow and relaxing muscles.
- ThermaPatch can be used to soothe muscle aches, joint pain, and stiffness.

Pharmacool

- Pharmacool is intended mainly to reduce pain and swelling, especially after injuries.

- Pharmacool works by constricting blood vessels, decreasing blood flow to the affected area, and numbing the area, which can help manage pain.

Indications:

ThermaPatch

(ThermaPatch Adhesive and ThermaPatch Non-Adhesive):

- Muscular aches and tightness.
- Sore joints - sports injuries.
- Tendon or ligament strains, sprains.
- Pelvic pain and menstrual cramps.

Pharmacool:

- Soft tissue injuries.

-Inflammation resulting from everyday bumps and bruises.

For example: minor injuries, contusions, swelling from hitting or bumping into something.

- Headache.

Thermoregulating pads

Intended patient population

ThermaPatch

(ThermaPatch Adhesive and ThermaPatch Non-Adhesive):

- All patient population except infants, individuals who are sensitive to or who have had an allergic reaction to the device or any of its components and any lay person with motor disabilities who wouldn't be able to remove patch himself.
- Females with menstrual cramps.
- Individuals suffering from arthritis, joints, back and shoulder pain.
- Athletes.
- Patients undergoing physical therapy after accidents/surgeries.
- Patients who need to reduce/relieve their pain sensation and cannot use analgesic medication due to its side effect.
- The below listed patient population shall use the device with CAUTION and after consulting a healthcare professional:
A) Pregnant women.
B) Any patient population with reduced/absent skin sensation. For example, but not limited to:
 - Diabetic patients,
 - Patients with impaired circulation,
 - Patients with multiple sclerosis,
 - Patients with spinal cord injuries,
 - Patients with rheumatoid arthritis and patients with nerve damage.

Pharmacool:

- Suitable for all patient population except infants, individuals who are sensitive to or who have had an allergic reaction to the device or any of its components and any lay person with motor disabilities who wouldn't be able to remove patch himself.
- Individuals with acute soft-tissue injuries and recent injuries to induce pain relief, reduce inflammation and swelling.
- It is commonly used in sports medicine and acute injury rehabilitation, including for injured athletes and ordinary patients under specific conditions.
- Patients who need to reduce/relieve their pain sensation and cannot use analgesic medication due to its side effect.
- The below listed patient population shall use the device with CAUTION and after consulting a healthcare professional:
A) Pregnant women.
B) Any patient population with reduced/absent skin sensation. For example, but not limited to:
 - Diabetic patients,
 - Patients with certain neurological conditions that can affect the ability to perceive cold or manage the sensation,
 - Patients with certain skin conditions like dermatitis or eczema which may be aggravated by cold exposure.
 - Patients with impaired circulation and/or cold sensitive patients.

Intended users:

Used by healthcare professionals and layperson for the treatment of indications specified in product labelling not limited to any level of education nor professional competence.

Performance Characteristics:

ThermaPatch

(ThermaPatch Adhesive and ThermaPatch Non-Adhesive)

- Natural heat produced due to air-oxidation of the Patch's ingredients upon contact with oxygen in air causes vasodilation and increases local blood flow to the affected area providing oxygen and nutrients that aid healing process resulting in pain relief, increased elasticity of connective tissues, muscle relaxation, spasm and stiffness reduction.

Pharmacool

- Simply breaking the small internal bag of water quickly activates the Urea crystals to give up to 30 minutes of ice-cold therapy. Which control pain by instigating local anaesthesia. It also decreases oedema, nerve conduction velocities, cellular metabolism and local blood flow through vasoconstriction reducing the inflammation that occurs after the acute structural trauma by reducing temperature and blood flow at the site of injury or muscle damage.

	Cold	Heat
Pain	↓	↑
Spasm	↓	↑
Metabolism	↓	↑
Blood flow	↓	↑
inflammation	↓	↑
Edema	↓	↑
Extensibility	↓	↑

Thermoregulating pads

A description of other devices which are intended to be used in combination with it:

1. ThermaPatch

ThermaPatch Adhesive: after tearing the plastic wrapper to pen, taking off the patch's protective liner and exposing the adhesive side, the patch is applied to the affected area either on skin itself or clothes (in case of delicate or aged skin) without bandaging over the patch.

ThermaPatch Non-Adhesive: used with belt/body wrap and knee wrap.

2. Pharmacool: must be wrapped in a cloth or protective sleeve before application. The wrap or sleeve should be in direct contact with the skin to ensure safe use.

Instructions for Use:

A) ThermaPatch:

1. ThermaPatch Adhesive

- Apply to dry, clean skin
- Tear the plastic wrapper to open. Don't bandage over the patch and don't cut, massage, fold, moisten or wet the patch on using.
- Take off the Patch's protective liner and expose the adhesive side, then apply it to the affected area either on Skin itself or Clothes [in case of delicate skin, aged skin (people over 55 years old), heat-sensitive skin or high-risk patients], making sure the patch's soft side is in contact with your skin and the sticky side is facing clothes.
- The patch activates within few minutes providing penetrating warmth for 8 hours.

2. ThermaPatch Non-Adhesive

2.1. On using body wrap/belt:

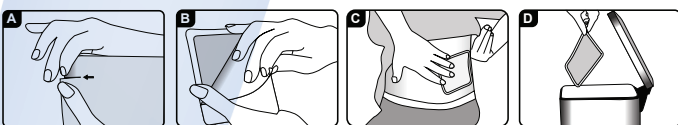
- Apply to dry clean skin
- Position it around the intended treatment area, secure it using velcro it's Ideal for lower back area. Although it can be wrapped over other body parts and joints.
- Tear the plastic wrapper to open and don't bandage over the patch and don't cut, massage, fold, moisten or wet the patch on using.
- Then insert one or two patches into body wrap/ belt pocket.
- The patch activates within few minutes providing penetrating warmth for 8 hours.
- The body wrap/belt can be reused again with new patches
- Single use only, first use of heat patches is during 8 hours after being activated. After first use, the reaction is depleted resulting in no effect for the device.

2.2. On using knee wrap

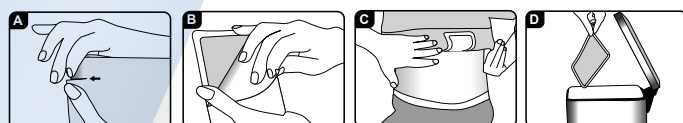
- Wear elasticated wrap around knee area.
- Tear the plastic wrapper to open and don't bandage over the patch and don't cut, massage, fold, moisten or wet the patch on using.
- Then insert one heat patch into the wrap pocket on both sides of the knee.
- The patch activates within few minutes providing penetrating warmth for 8 hours.
- The knee wrap can be reused again with new patches.
- Single use only, first use of heat patches is during 8 hours after being activated. After first use, the reaction is depleted resulting in no effect for the device.

ThermaPatch Adhesive

- When applied on skin itself



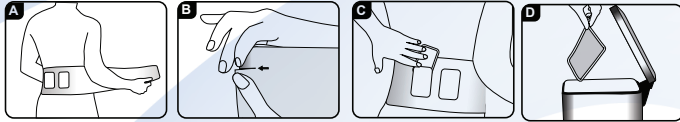
- When applied on clothes



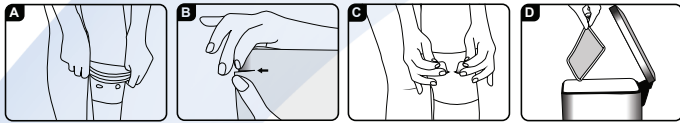
Thermoregulating pads

ThermaPatch Non-Adhesive

- On using body wrap/belt:



- On using knee wrap

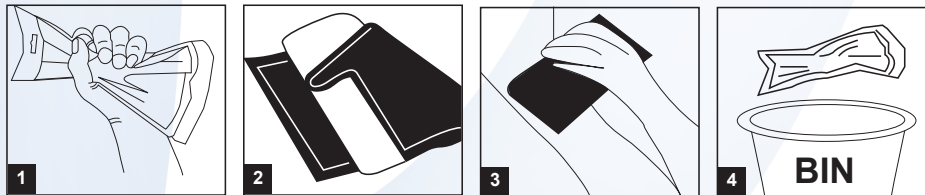


Precautions of remove

- To remove, slowly peel off the patch.
- After use, dispose safely in household waste after cooling.

B) Pharmacool:

1. Locate inner sachet and squeeze sides of pack together until it bursts
2. Shake pack vigorously until ice cold
3. Wrap in a cloth or protective sleeve before applying directly to the skin
4. Use pack in short intervals no longer than 20 mins
5. Allow skin to return to normal temperature between treatments
6. No refrigeration required
7. After use, dispose safely in household waste.
8. Single use only. After first use, the reaction is depleted resulting in no effect for the device.



Thermoregulating pads

Models Variants	Shape	REF	Size	/Pieces box	/ Boxes Case
ThermaPatch Non-Adhesive		THP6080	6x8 cm with knee wrap	4	24
		THP95130	9.5x13 cm Set with belt	4	24
ThermaPatch Adhesive		THPADH6080	6x8 cm	4	24
		THPADH95265	9.5x26.5 cm	4	24
		THPADH95130	9.5x13 cm	4	24
		THPADHC95130	9.5x13 cm	4	24
		THPADH95300	9.5x30 cm	4	24
		THPADH95220	9.5x22 cm	4	24
		THPADH100200V	10x20 cm vertical	4	24
		THPADH100200H	10x20 cm Horizontal	4	24
		THPADH100150	10x15 cm	4	24
		THPADH90130	13x19 cm	4	24
		THPADH100300	10x30 cm	4	24
		THPADHFEETM	Feet S-M	4	24
		THPADHFEETL	Feet L-XI	4	24

Models Variants	REF	Size	/Pieces box	/ Boxes Case
Pharmacool	ICE130150	13 x 15 cm	2	48
Pharmacool	ICE120290	12 x 29 cm	2	60
Pharmacool	ICE150150	15 x 15 cm	2	80
Pharmacool	ICE150230	15 x 23 cm	2	40
Pharmacool	ICE150150K	15 x 15 cm	2	80
Pharmacool	ICE120140	12 x 14 cm	2	48

- Amria - Alexandria - Egypt
 Tel. : 002 03 4500264 Fax : 002 03 4500263
 - Kafr-El-Zayat P.O.Box 38 Egypt
 Tel. : 002 040 2545643 Fax : 002 040 2545645
 E-mail : sales@pharmaplast-online.com

 **Pharmaplast**
 www.pharmaplast-online.com

Pharmaplast Amria 23512, Alexandria - Egypt www.pharmaplast-online.com		Brochure artwork template no: I-TM /AR/001-6 (Version 3)						
Customer : Pharmaplast		Product name : Thermoregulating pads						
Issue date : 22-04-2024		Prepared by : Nader Nabil Zaki						
Colors : CMYK		Dimension : A4						
Issue Number	Revision Date	Description of Change	Rationale For Change	Amended by	Effective date	Approved by		
						Artwork manager	Marketing department	RA Department
1	N/A	New Issue	N/A					
2	31-05-2025	differentiation between ThermaPatch Adhesive and ThermaPatch Non-Adhesive variants.	Address NB observations.	Nader Nabil Zaki				
3	21.09.2025	amending sections in the brochure	Address NB comments	dnoia gamal				
4	26.10.2025	amending sections in the brochure	Address NB comments	Ereiny George	27-10-2025	